

12th ANNUAL WALTER E. BRANDON

SATURDAY
SEPT. 26
2009

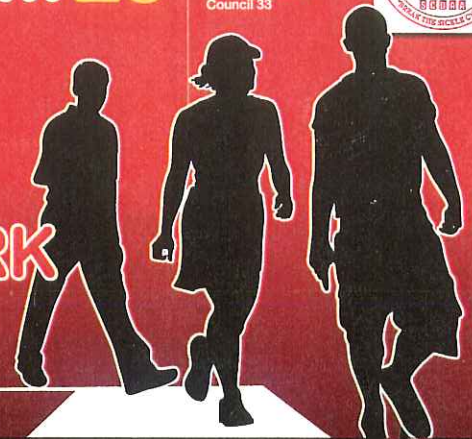
SPONSORED BY
Sickle Cell Disease
Association of America
Philadelphia / Delaware
Valley Chapter and
AFSCME District
Council 33



SICKLE CELL DISEASE
5K WALK A-THON
& BE SICKLE SMART EVENT

FAIRMOUNT PARK

Belmont Avenue & North Concourse Drive
Philadelphia, PA
(Across from the Please Touch Museum)



REGISTRATION // 8am
OPENING CEREMONY // 9am
KICK OFF // 10am

For registration or sponsorship opportunities
contact the Sickle Cell Disease Association of
America Philadelphia / Delaware Valley Chapter.

Philadelphia Business & Technology Center
5070 Parkside Ave., Suite 1404,
Philadelphia, PA, 19131
Office (215)-471-8686 / Fax (215) 471-7441
Email: scdaa.pdvc@verizon.net
www.sicklecelldisorder.com



SICKLE CELL AWARENESS MONTH

EVENTS

SEPTEMBER 19, 2009

ANNUAL SICKLE CELL SEMINAR

Philadelphia International House
3701 Chestnut Street
Philadelphia, PA
10am - 4pm

SEPTEMBER 26, 2009

12TH ANNUAL WALTER E. BRANDON SICKLE CELL WALKATHON AND BE SICKLE SMART EVENT

Belmont Avenue and North Concourse Drive
Philadelphia, PA
Across from the Please Touch Museum
8am / Registration
9am / Morning Ceremony
10am / Walkathon Kick-Off

SEPTEMBER 30-OCTOBER 3, 2009

SICKLE CELL DISEASE ASSOCIATION OF AMERICA

37th Annual Convention
Orlando Florida
Caribe Royale Orlando Hotel and www.sicklecelldisease.org to get
more information about SCDAA convention.