

2019 Annual Report

GPHA AI-Assist Behavioral Healthcare Center

DIVISION



Our Mission

Is to provide quality comprehensive primary medical, dental, behavioral health and child development services through our expert staff of professionals. While using a fiscally responsible approach, we seek to meet the needs of a diverse population, regardless of their ability to pay.

Our Vision

To be recognized as the regional leader in the delivery of multidisciplinary ambulatory care. GPHA Inc. will adhere to the unique needs of each individual, utilizing the disciplines of medicine, dentistry, behavioral health and child development in a manner that positively impacts the entire community.

Our Values

Service Excellence - Giving the best quality, world-class service and achieving excellence each day.

Respect - Giving respect to self and others and maintaining an environment of teamwork and growth

Integrity - Acting with honesty and soundness of moral character in all we do.

Innovation - Striving for new creative ideas that have the potential to positively change the community.

Accountability - Being responsible for our actions that influence the lives of our customers and fellow workers.

Board of Directors

- ▶ Dr. Linda Powell, First Vice Chairperson
- ▶ Dr. Stephen Cox, Second Vice-Chairperson
- ▶ Mary Ann Galeota, Esq., Treasurer
- ▶ Roger Collins, Assistant Treasurer
- ▶ Paula D. Jackson, MSN, CRPN, Corp. Secretary
- ▶ Samuel Nichols, Assistant Secretary
- ▶ Claudia Griggs
- ▶ Sajjid Syed, MS. P.PH



- ▶ Claire A. Washington, MSN, CRNP
- ▶ Phyllis H. Detwiler, DMD, MPH
- ▶ Flora Castillo, CHIE
- ▶ Janice Smith
- ▶ Sandra Hawkins
- ▶ Mary Wombwell, Ed.D., RN
- ▶ Ashley Austin Hines, IV
- ▶ Dorsey Lillian

Brian Clark, CEO/Executive Director



Whose visionary skills, dedication and drive will lead us well into the years to come.

Message from the Chief of Behavioral Healthcare Services

As we reflect on year 2019, we would like to first thank our members for allowing GPHA/AI-Assist Behavioral Healthcare Center to be their outpatient treatment facility. Secondly, we would like to thank our wonderful team of professional and support personnel; they are conscientiously and compassionately working to make a significant and positive impact on the lives of members served. We truly appreciate each employee that has worked with us in 2019; we recognize that our success was made possible as a result of their commitment and dedication to help those we serve.

WE are committed and passionate about delivering behavioral healthcare treatment in an environment that is not limited to a team of addiction and mental health professional, but a team that includes medical, and dental professionals all working together to meet our members' complex need.



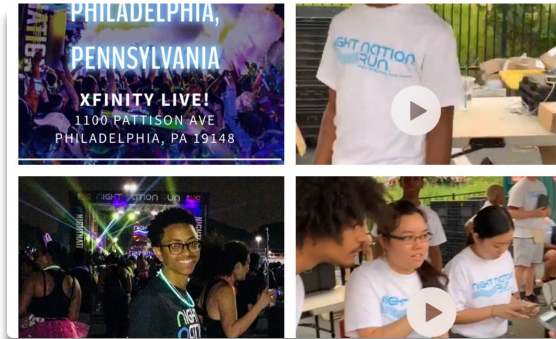
Maggie Lyons-Johnson, MHS, LPC, CAADC
Chief Behavioral Healthcare Officer

Highlights and Accomplishments:



Wrap Group Initiative

Provided external Wrap Around Services/Group to Seniors.



Night Nation Run

Behavioral Health participated in the 2019 Night Nation Run.



Water Lantern Festival

Behavioral Health participated in the 2019



New and On-going Accomplishments

NEW ENDEVORS

- Piloted a Social Determinants of Health Employment Workshop to assist members in job seeking opportunities, mentorship, resume building, interview preparation and advocacy.
- Created an Admission and Discharge Department.
- Implemented Mental Health and Substance Abuse Screenings for College Students on campus.

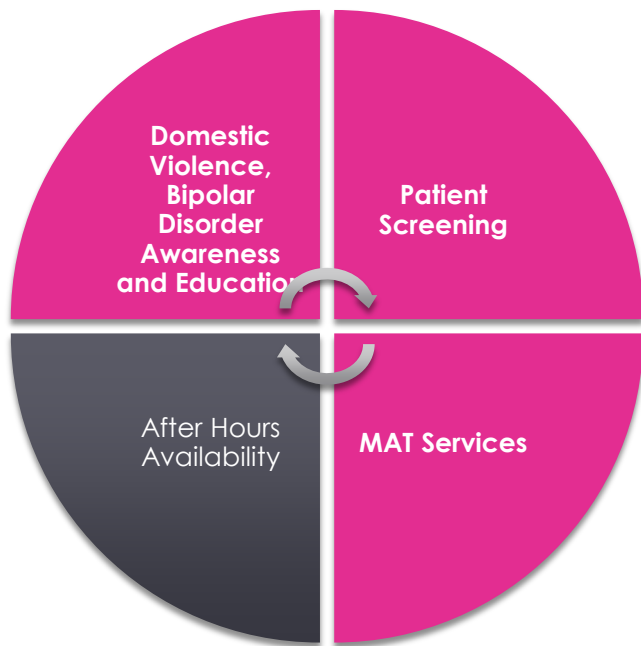
ON-GOING ACCOMPLISHMENTS

- Increased Access to Behavioral Health care at our Health Centers.

Continued...

- Increased access to School Based Therapy and family support in Philadelphia's charter school.
- Integrated Care Initiative; Continued to Improved service collaboration across divisions;
- Linkage with Community Activist for Monthly Food Baskets, Toys for Children & Summer Zoo passes. Re-entry Job Opportunities and Homeowner Repair Programs.
- Providing Community forums focused on providing psychoeducation, resources and support to our members, Family and community on various disorders.
- Staff Appreciation Events: Appreciation Dinner cruise; Annual Holiday Luncheons; Annual Holiday Dinner.
- Celebration Luncheon banquet showing appreciation for mother's in May and father's in June for staff and a special guest.
- Participating in several community events such as: The 2019 Recovery Walk; and, Health Fairs throughout Philadelphia (Educating the community on D&A Disorders and Mental Illness.)
- Annual Members Appreciation Luncheons at each location.

2019 Noteworthy Milestones



Grand Opening/Ribbon Cutting Ceremony. On, December 18, 2019 GPHA opened Greater Philadelphia Pharmacy (GPP) located at Al-Assist Behavioral Healthcare Center.

Behavioral Health has maintained 20 on-site Community Mental Health forums: Educating 120 community members on Mental Illness particularly Bipolar Disorder, ADHD, Domestic Violence and Addiction.

Patient's Screened for Depression, Anxiety, Substance Use Disorder reached 100% across the board. Of this population, 93% were screened for trauma.

Overall Treatment Plan compliance increased by more than 18% achieving the set goal of maintaining treatment plans completed at time of service.

Progress Note Completion within 24-hours increased from 79% to 82%.

After-Hour Call Response time averaged at 1.5 minutes with 93% note completion within 1 hours of the call.

SCREENINGS COMPLETED AT INTAKE

• Depression Screening
100%

• Anxiety
Screening 100%

• Trauma Screening 93%

• Drug and Alcohol
Screening 100%

• Genesight Eligibility
Screening 74%

AND

83% of Clients that
presented with
symptoms associated
with depression
received a Suicide Risk
Assessment

71% of Urine Drug
Screens were
completed at time of
admission for Clients
presenting with
Substance use Disorders

2019- Collaborative Milestones



- ▶ Behavioral Health engages in a Multidisciplinary Team Approach for Case Consultations involving complex share patients.
- ▶ **Medication Assisted Treatment** alongside the Medical Division to combat the Opioid Epidemic in Philadelphia.
 - ▶ MAT was provided at the following locations in 2019:
 - ▶ Woodland Avenue Health Center
 - ▶ Frankford Avenue Health Center
 - ▶ Southeast Health Center
 - ▶ Hunting Park Health Center
 - ▶ Since 2018, there was a 170% increase in patients receiving MAT services.
 - ▶ In 2019 there were over 384 services provided to MAT patients.
- ▶ Provided Collaborative Drug and Alcohol Outpatient Treatment to Internal and External MAT Providers' Patients

Behavioral Healthcare Center 2019

PASSED THEM
ALL with



Flying
Colors.



Center of Excellence



- Unique Patients with Bipolar Diagnosis 2018, (773)
- Unique Patients with Bipolar Diagnosis 2019, (1007)
 - Increase of over 30.27%
- Visits for Patients with Bipolar Diagnosis Increased by 12% since, 2018.
- Depression Screenings every visit 97%
- Suicide Screenings every visit 90%
- Substance Abuse Screenings every 90-days 90%

Scope of Services:

We Provide

- ▶ **Comprehensive Biopsychosocial Evaluation**
- ▶ **Treatment Planning**
- ▶ **Psychological Evaluation**
- ▶ **Medication Maintenance**
- ▶ **Medication Assistant Treatment (MAT Program/PC)**
- ▶ **Integrated Care (Behavioral Health Consultant Model)**
- ▶ **Anger Management**
- ▶ **Individual Counseling/Psychotherapy**
- ▶ **Group Psychotherapy**
- ▶ **Family/ Marital/ Couples Counseling**
- ▶ **Grief and Loss Counseling/Therapy**



This Photo by Unknown Author is licensed under [CC BY-SA-NC](https://creativecommons.org/licenses/by-sa/4.0/)

Behavioral healthcare services are available to the following age groups:

Mental Health- age 3 and up & Substance Abuse- age 14 and up

Additional Services Include:

- ▶ **Confidential HIV Testing**
- ▶ **HIV Pre & Post-Test Counseling**
- ▶ **Genesight Testing**

Disclaimer: The facility does not discriminate on the basis of race, creed, gender, ethnicity, color, national origin, (including those with Limited English Proficiency), ancestry, religious creed, marital status, sex, sexual orientation, disability, financial status, belief system, or religion in the admission of outpatient Members.

Admission to AL-Assist Behavioral Healthcare Center as opposed to placement in a detoxification inpatient or residential program and/or inpatient mental health acute care is based upon the Member's needs. The appropriate level of care is determined during the intake process.



This Photo by Unknown Author is licensed under [CC BY-NC](https://creativecommons.org/licenses/by-nc/4.0/)

CLINICAL TEAM

Primary Care Team

Psychiatrist

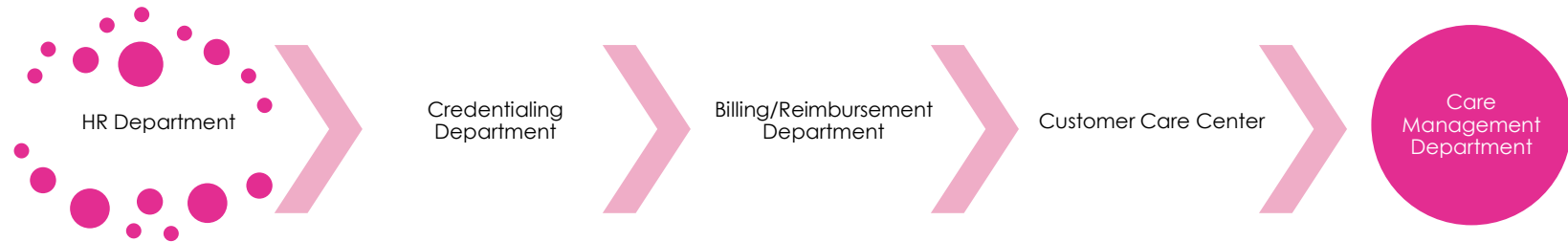
Behavioral Health Consultant

Counselor III

- Medical Assistant
- Peer Specialist
- Mental Health Workers



SUPPORT TEAM



LEADERSHIP TEAM





GREATER PHILADELPHIA HEALTH ACTION, INC.
AL-ASSIST BEHAVIORAL HEALTHCARE CENTER STATEMENT OF REVENUE & EXPENSES
For the Twelve Months Ending December 31, 2019

Operating Expenses

Salaries & wages	\$ 4,478,958
Fringe benefits	\$ 1,102,414
Professional fees	\$ 374
Consultant & contractual	\$ 15,783
Temporary office services	\$ 1,601,942
Security & transportation	\$ 39,726
Translation Services	\$ 165
Laboratory fees	\$ 966
Referral costs	-
Medical Supplies	\$ 10,710
Dental Supplies	\$ 2,140
Office Supplies	\$ 43,663
Marketing expense	\$ 698
Insurance & bonding	-
Data processing	\$ 120,281
Space rental	\$ 36,246
Equipment rental/lease	\$ 3,221
Repair & maintenance	\$ 103,344
Cleaning	\$ 152,966
Utilities	\$ 124,417
Telephone	\$ 50,613
Travel, conferences/meetings	\$ 13,697
Taxes & licenses	\$ 42,786
Subscription & dues	\$ 4,855
Interest & bank charges	\$ 6,433
Noncapitalized equip./furniture	\$ 1,013
Bad Debt Expense	\$ 2,206,535
Event Expense	\$ 1,672
Total operating expenses	\$ 10,165,618
Management and General allocation	\$ 3,954,801
Total before depreciation	\$ 14,120,419
Nonoperating expenses	
Depreciation expense	\$ 245,004
Gain/loss on Disposal of Assets	-
Total Expenses	<u>\$ 14,365,423</u>

For Hours of Operation, please contact the location nearest you.

OUR MISSION

Greater Philadelphia Health Action, Inc.'s mission is to provide high quality, comprehensive medical, dental, behavioral health and child development services through our expert staff of professionals. While using a fiscally responsible approach, we seek to meet the needs of a diverse population, regardless of their ability to pay.

GPHA Locations

1. Al-Assist Behavioral Healthcare Center
1401 S. 4th Street, Philadelphia, PA 19147
2. Chinatown Medical Services
930 Washington Avenue, Philadelphia, PA 19147
3. Frankford Avenue Health Center
4500-10 Frankford Avenue, Philadelphia, PA 19124
4. GPHA, Inc. Dental and Behavioral Healthcare
5501 Woodland Avenue, Philadelphia, PA 19143
5. GPHA, Inc. Medical Suite at Temple University
Kornberg School of Dentistry
3223 North Broad Street, Philadelphia, PA 19140
6. GPHA South Philadelphia Health Center
1408 S. Broad Street, 2nd Floor, Philadelphia, PA 19146
7. Hunting Park Health Center
1999 W. Hunting Park Avenue, Philadelphia, PA 19140
8. Snyder Avenue Dental Center
640 Snyder Avenue, Philadelphia, PA 19148
9. Southeast Health Center
800 Washington Avenue, Philadelphia, PA 19147
10. Wilson Park Medical Center
2520 Snyder Avenue, Philadelphia, PA 19145
11. Woodland Avenue Health Center
5000 Woodland Avenue, Philadelphia, PA 19143
12. Woodland Academy Child Development Center
5401-09 Grays Ave., Philadelphia, PA 19143

GPHA Executive Office
1401 S. 31st Street, Philadelphia, PA 19146

